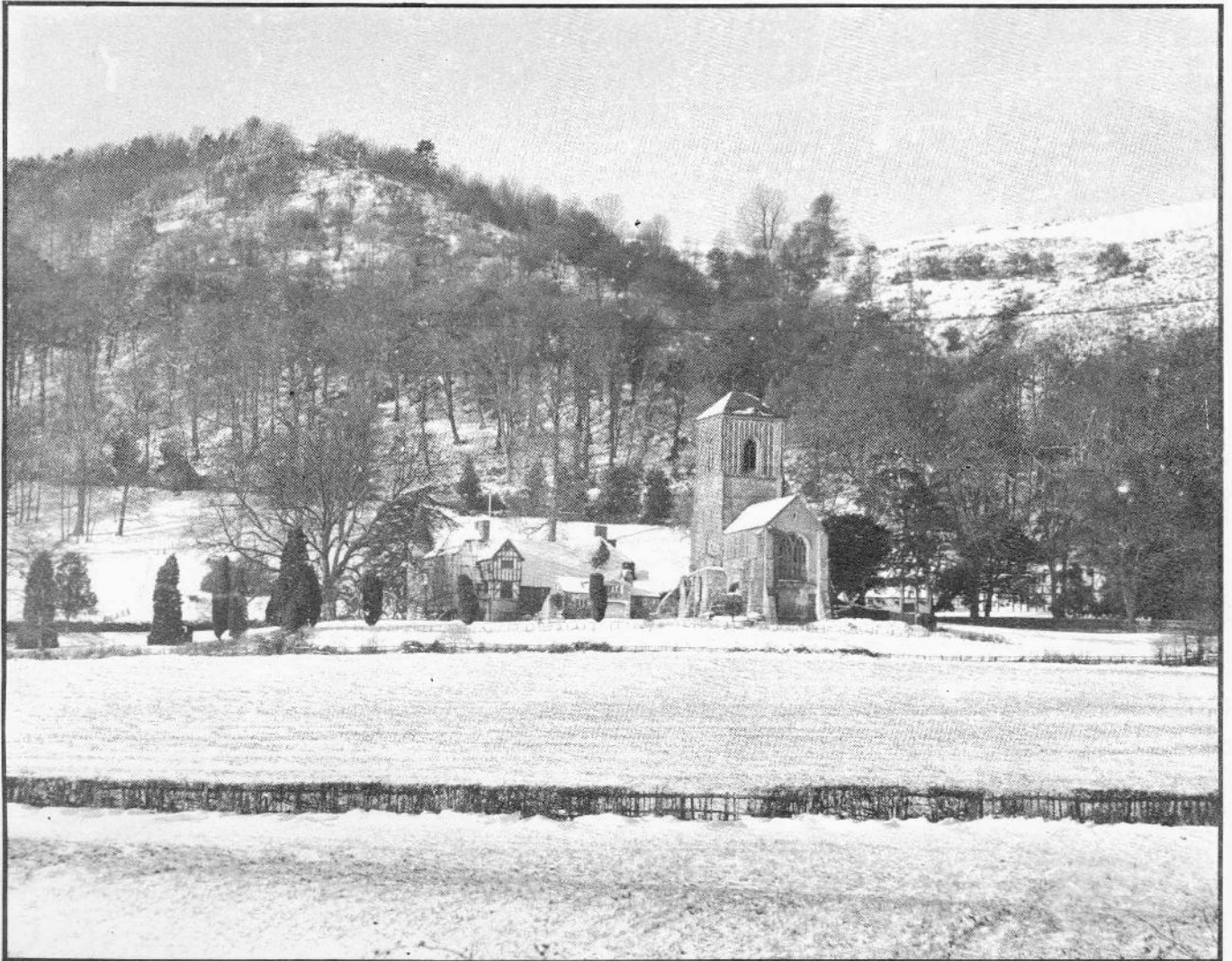


**bush
telegraph**

FEB 1969



BUSH

TELEGRAPH

Wood Lane's Club Magazine

Editor

Geoff Holder

Editorial Board

Brian Tilbury
Mike Hagger
Penny Hamlyn
Ernie Cave
Denis Groombridge

Cover —

Little Malvern Priory, Worcs.

Richard Grigsby

vol. 15 no. 1

EDITORIAL

"IF Winter comes, can Spring be far behind?" asked the poet. And with the present unseasonable mildness of the weather his sentiments must be felt by almost everyone. The mornings and evenings are noticeably lighter, but for the more observant there are other, more subtle, signs. The occasional blackbird giving song in the early half-light, snowdrops, crocuses, even primroses showing colour in sheltered spots, and a sparrow with a beakful of dried grass but not yet quite sure what to do with it. The ubiquitous wood-pigeon, too, among the earliest starters, is already displaying his distinctive swooping nuptial flight - there will be nests in the bare trees of London's squares before the month is out.

Come snow, come frost, can Spring indeed be far behind?

WELCOME to Denis Groombridge, who has volunteered his services on the Editorial Staff of the Bush Telegraph. His expertise with a camera too, will be especially valuable to us.

TABLE TENNIS - Late Results

Mon. 26th Jan.	1st team	v	F. Div. Police II	(Away)	Won 6-4
Mon. 26th Jan.	2nd team	v	F. Div. Police IV	(Home)	Won 7-3

The 1st team now lead Division IV but Chiswick Poly. are one point behind with a game in hand.

From the Council Table —

The Executive Council and Finance Committee met on December 16th and discussed a number of important issues.

Concerning the use of the Projection Room the Secretary explained that he had been in contact with Mr. Tempest on the subject of fire risk and the possibility of improving the exit arrangements. Mr. Tempest had replied that structural alterations, such as the provision of direct access into the corridor, were impractical but had drawn up a series of special regulations for the use of the Projection Room which are now in force.

The Secretary brought to the Council's attention the fact that some complaints had been received about the playing of badminton matches on club nights. The Vice-Chairman replied that the incident in question was unfortunately unavoidable and apologised for the inconvenience caused. Council was of the opinion that members should not be deprived of club facilities on club nights unless there was no possible alternative, in which case due warning should be given.

In answer to a question from the Secretary Mr. Tempest said it would be possible to revive the Staff Annual Dinner-Dance. He said that 25/- per employee per annum was available from the Company towards such a function, or indeed towards any social function provided that interest was sufficiently high and that the number of guests did not exceed the number of staff present. The Council was asked to evaluate the feelings of members in this matter.

It was noted that the Halloween Dance was very successful and a vote of thanks was proposed to Mrs. King and all who assisted her in arranging the function.

A preliminary evaluation of the Club budget for 1969 was carried out on the basis of individual budgets presented by section secretaries and expenditure during 1968. The Vice-Chairman was asked to prepare a detailed budget for presentation to the Company.

Thank You

As there was insufficient time to thank everyone personally, Collette wishes to use our columns to thank all her friends at Wood Lane who kindly contributed to her leaving presents, which were:

A black padded ottoman

A painting (from friends on the 5th floor)



A Dance
for
St Valentine
Friday 14th Feb.
7.45 pm

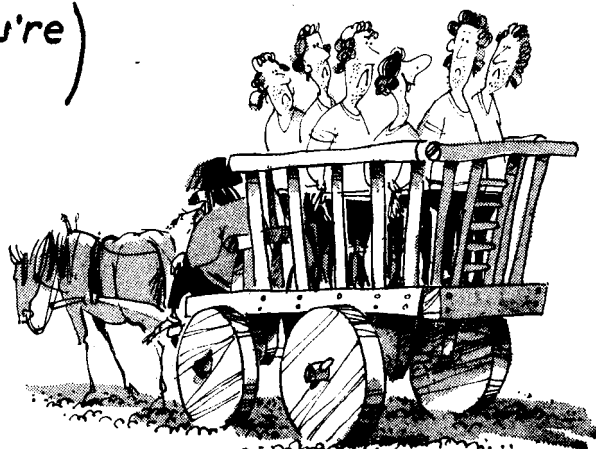


Tony Dee Show Band.



Free Buffet
(Sherry too if you're
early enough)

Raffle



Bring your Friends —
— we don't mind how.



See Eileen King
Brian Tilbury for TICKETS Single 6'6 YES! Double 12'-

FOR SALE

Hand trained baby squirrel monkey, quite tame (type used by street photographers), Makes excellent and unusual pet. Cheap and easy to feed. Cost £17, will accept £10. Phone Pete Higgins Ext.262.

AUSTIN 1100 de luxe, 1966 white, very good condition, seat belts/covers £455 o.n.o. P.S. HUDDART, Ext. 243.

Badminton

RESULT

Hammersmith & District Mens Division II

B.I.C.C. v OAKTON (away) Won 6-3

Having only just completed the draw for the annual American Tournament, for the following week, the tournament committee realise that organisation must immediately start for the Handicap Doubles Knockout Tournament. You enter with a partner (with whom you play throughout the tournament) of your own choice. The only restriction is that members of the first team are not allowed to play together. Unlike the American Tournament, it is run on a knockout basis and a match consists of the best of three games of 15 points each. After a large entry in the American Tournament who knows what number might enter? So come on, all ye keep fit addicts, sign below.

3RD HANDICAP DOUBLES BADMINTON TOURNAMENT 1968/69

ENTRY FORM

(Please complete in block capitals)

NAME DEPT TELE NO

PARTNER'S NAME

Separate entry forms should be sent by each player.

First rounds commence Monday 3rd March.

Second rounds commence Monday 17th March.

Semi-finals & finals will be played on Wednesday 2nd April.

Entry forms should be sent to M.J. Squelch R. & P.

Entries close Friday 21st February.

Bridge

Moderate success has been achieved so far this season by members of the Bridge Section.

In the Surdoc Trophy, a multiple teams-of-four competition, a Wood Lane quartet consisting of the Unlucky Expert, the South Pole, a Palooka, and a Guest, missed first place by some four imps. Close analysis of the final result revealed that the South Pole had been responsible for chucking first place.

Three pairs did well to reach the semi-final of the L.B.H. pairs competition, the Todd Goblets. The best result was achieved by that well-known Italian pair, Gobbetti-Condoni, playing the Wood Lane 'Uno Club' system, who came first in their heat. Alas, the semi-final proved to be too tough for our players and all three pairs failed to qualify.

LEAGUE RESULTS

<u>London</u>	P	W	D	L	Imps for	Imps Against	V.P.s
<u>Business Houses</u>							
<u>League, Div. II</u>	5	3	-	2	304	299	27
<u>Hammersmith League</u>	P	W	D	L	Imps for	Imps Against	V.P.s
<u>Division I</u>	1	1	-	-	55	35	7

Table Tennis

1st Team (Div. 4)

Wed. 8th Jan.	v	MOV III	{Away}	Drawn	5 - 5
Mon. 20th Jan.	v	Expandite III	{Home}	Won	9 - 1

An away match versus Nalgo has twice had to be postponed.

Against MOV III, Mike Kendle and Ken James played without a third member of the team, but still managed to draw.

2nd Team (Div. 7)

Wed. 18th Dec.	v	Eastmans III	{Away}	Won	10 - 0
Wed. 8th Jan.	v	600 Club	{Home}	Drawn	5 - 5
Mon. 20th Jan.	v	Bardhill II	{Away}	Won	7 - 3

the FILM column

NEXT FILM SHOW

Our next show on Wednesday 12th February is a double feature programme. IT HAPPENED HERE is a documentary-style account of what might have happened in Britain if events had turned out differently in 1940. Fernandel features in THE RED INN, a sometime banned "comédie noire", about an inn-keeping couple who murder their guests and a monk who receives their confession but must remain silent etc. etc.,

NEW CINEMA CLUB

The current N.C.C. programme offers a wide selection of films from the international scene. The season includes WARRENDALE (a Canadian documentary about emotionally disturbed children considered too harrowing for B.B.C. T.V.), Jean Luc-Godard's WEEK END, the prize winning Czech extravaganza BARON MUNCHHAUSEN and two programmes devoted to animated films.

ELECTRIC CINEMA CLUB

Yet another outlet for the addicted film goer, the Electric Cinema Club plans to hold late night shows at the Imperial Cinema, Portobello Road, W.11. Admission 5/-, membership 2/6 per annum. Details from Mike Dennis (357).

FILM RECOMMENDATION

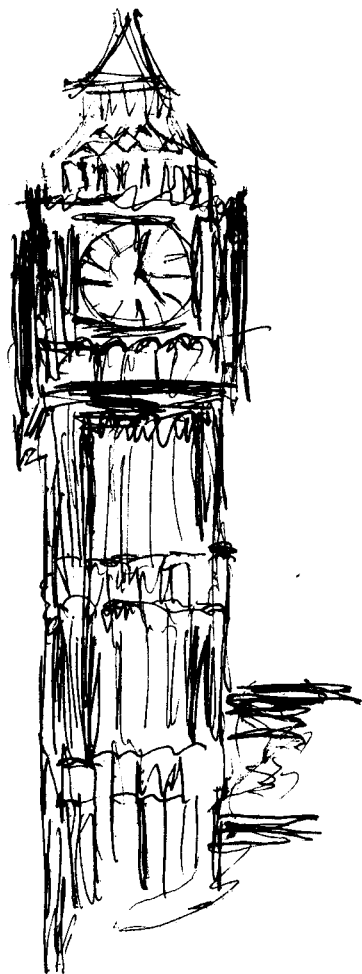
LES BICHES, directed by Claude Chabral, at the Cinecenta, Panton Street (off Leicester Square).

National Film Theatre Programme Summary

FEBRUARY					
1 Sat	4.00	7.30	Intolerance (183 mins)	PA	p. 7
2 Sun.	2.30		JOHN PLAYER LECTURE - ROBERT RYAN (Full Members free; Associates & Guests 5/- each)		p. 29
2 Sun.	4.30	6.45	9.00	A Blonde in Love	EST p. 18
3 Mon.		6.15		Joseph Kilton, Labyrinth, THE COMMITTEE	p. 29
3 Mon.			8.10	THE COMMITTEE, followed by a discussion with Philip French and John Coleman	p. 29
4 Tues.		6.15	8.40	Cubiria (1914)	PA p. 16
5 Wed.		6.15	8.45	The Unknown Soldier	EST p. 18
6 Thurs.		6.15	8.30	Scipione L'Africano	EC p. 11
7 Fri.		6.15	8.10	Jane and the Paycock	p. 22
7 Fri.			11.00 p.m.	The Pit and the Pendulum (1961) - LATE NIGHT	p. 19
8 Sat.	2.30			BFI OPEN FORUM (Admission free; tickets from Box Office. Members and Associates only)	See Flicks p. 2
8 Sat.		6.15	8.30	Philip Jenkins presents . . .	p. 9
9 Sun.	4.00			Scipione L'Africano	EC p. 11
9 Sun.			7.15	Knights of the Teutonic Order (175 mins)	EST p. 17
10 Mon.		6.15	8.30	Philip Jenkins presents . . .	p. 9
11 Tues.		6.15	8.40	The Hunchback of Notre Dame (1923)	PA p. 20
12 Wed.		6.15	8.30	The Mirrors of the Wolves (1924)	PA p. 5
13 Thurs.		6.15	8.45	The Grapes of Wrath	p. 19
14 Fri.		6.15	8.30	Murder	p. 24
14 Fri.			11.00 p.m.	Gold Diggers of 1938 - LATE NIGHT	p. 19
15 Sat.	4.00			THE FILMS OF U.S.C. - Recent Films '67-'68	p. 29
15 Sat.		6.15		THE FILMS OF U.S.C. - Retrospective '64-'66	p. 29
15 Sat.			8.30	THE FILMS OF U.S.C. - New Directions '64-'66	p. 29
16 Sun.	3.30			JOHN PLAYER LECTURE - J. LEE THOMPSON (Full Members free; Associates & Guests 5/- each)	p. 29
16 Sun.	4.30			THE FILMS OF U.S.C. - Recent Films '67-'68	p. 29
16 Sun.		6.45		THE FILMS OF U.S.C. - Retrospective '64-'66	p. 29
16 Sun.			9.00	THE FILMS OF U.S.C. - New Directions '64-'66	p. 29
17 Mon.		6.15	8.30	THE BEST OF AMERICAN STUDENT FILMS 1968	p. 30
18 Tues.		6.15	8.30	Cleopatra (1934)	p. 14
19 Wed.		6.15	8.30	RAILWAYS - the story of the steam locomotive on film JOHN PLAYER PRESENTATION (All seats bookable)	p. 30
20 Thurs.		6.15	8.30	Les Quatre Cents Coups	EST p. 19

21 Fri.		6.15	8.30	The Skin Game	p. 34
21 Fri.			11.00 p.m.	The General - LATE NIGHT	p. 20
22 Sat.	4.00	6.15	8.30	M (Long)	p. 23
23 Sun.	2.30			JOHN PLAYER LECTURE - JESSE LASKY, Jr. (Full Members free; Associates & Guests 5/- each)	p. 30
23 Sun.	4.00	7.15		Caesar and Cleopatra (135 mins)	p. 15
24 Mon.		6.15	8.30	When I Am Dead and White	EST p. 26
25 Tues.		6.15	8.30	Paper Planes	EST p. 25
26 Wed.		6.15		Paper Planes	EST p. 25
26 Wed.			8.30	Innocence Unprotected	EST p. 24
27 Thurs.		6.15	8.30	Too Many Parents	EST p. 25
28 Fri.		6.15	8.30	Rich and Strange	p. 35
28 Fri.			11.00 p.m.	Murder Inc. - LATE NIGHT	p. 20
MARCH					
1 Sat.	4.00	6.15		Do Not Mention The Cause Of Death	EST p. 26
1 Sat.			8.30	When I Am Dead and White	EST p. 26
2 Sun.	4.00	6.15	8.30	Gravitation	EST p. 27
1 Mon.		6.15	8.30	"Backing Up Some Surprising Claims" - Kevin Brownlow	p. 31
4 Tues.		6.15	8.30	Howling (1959)	EC p. 6
5 Wed.		6.15	8.40	The Hunchback of Notre Dame (1923)	PA p. 20
6 Thurs.			7.15	The Fall of the Roman Empire (187 mins)	p. 18
7 Fri.		6.15	8.30	Number Seventeen	p. 33
7 Fri.			11.00 p.m.	My Darling Clementine - LATE NIGHT	p. 20
8 Sat.	2.30			BFI OPEN FORUM (Admission free; tickets from Box Office. Members and Associates only)	See Flicks p. 2
8 Sat.		6.15	8.30	Great Expectations	p. 21
9 Sun.	2.00	6.45		Adios (Programme approx. 4 1/2 hours, with interval) (All seats bookable 10/- each)	EC p. 17
10 Mon.		6.15	8.30	Saturday Night and Sunday Morning	p. 21
11 Tues.		7.15		The Life and Death of Colonel Blimp (163 mins)	p. 21
12 Wed.		7.15		Cheyenne Autumn (161 mins)	p. 9
13 Thurs.		6.15	8.30	The Bank Dick	p. 21
14 Fri.		6.15	8.30	Lord Camber's Ladies	p. 23
14 Fri.			11.00 p.m.	The Black Cat (1934) - LATE NIGHT	p. 22

IT
HAPPENED
HERE



AND
FERNANDEL



THE
RED
INN

LECTURE ROOM - 6-30 P.M. 12TH. FEB

The Page $8\frac{1}{2}$ Column

A monthly miscellany.



FOOD FOR THOUGHT

Following the exploits of Apollo 8 we were interested to learn of the following statistics.

In 1910 horse-drawn trucks in New York City averaged 17.7 kph.

In 1967 motor trucks averaged 9.6 kph!

Onward ever onward!

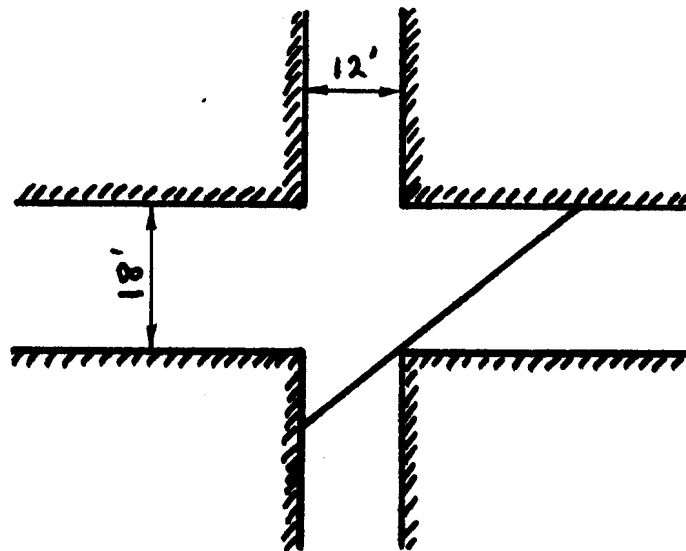
"DOWN AND DOWN WE GO"

From a recent set of minutes of the Potters Bar council.

"..... recommend that in the interests of economy the financing of the swimming pool should be by way of the sinking fund method".

Obviously a council of non-swimmers!

THE LADDER PROBLEM



Two roads one 18 feet wide and the other 12 feet wide intersect to form a crossroads and there are buildings abutting to the roads. What is the length of the longest ladder that can be manoeuvred around the corner? The ladder, in accordance with real old traditional usage is assumed to have no thickness and, of course, the ladder is assumed to be horizontal.

Solution next month.

In the second week of January the Condon Committee Report on UFO's was published in the U.S.A. Its findings have been widely publicised and it is well known that its conclusions are that there is no evidence that flying saucers have any terrestrial origin.

We shall be discussing the Condon Report next month.

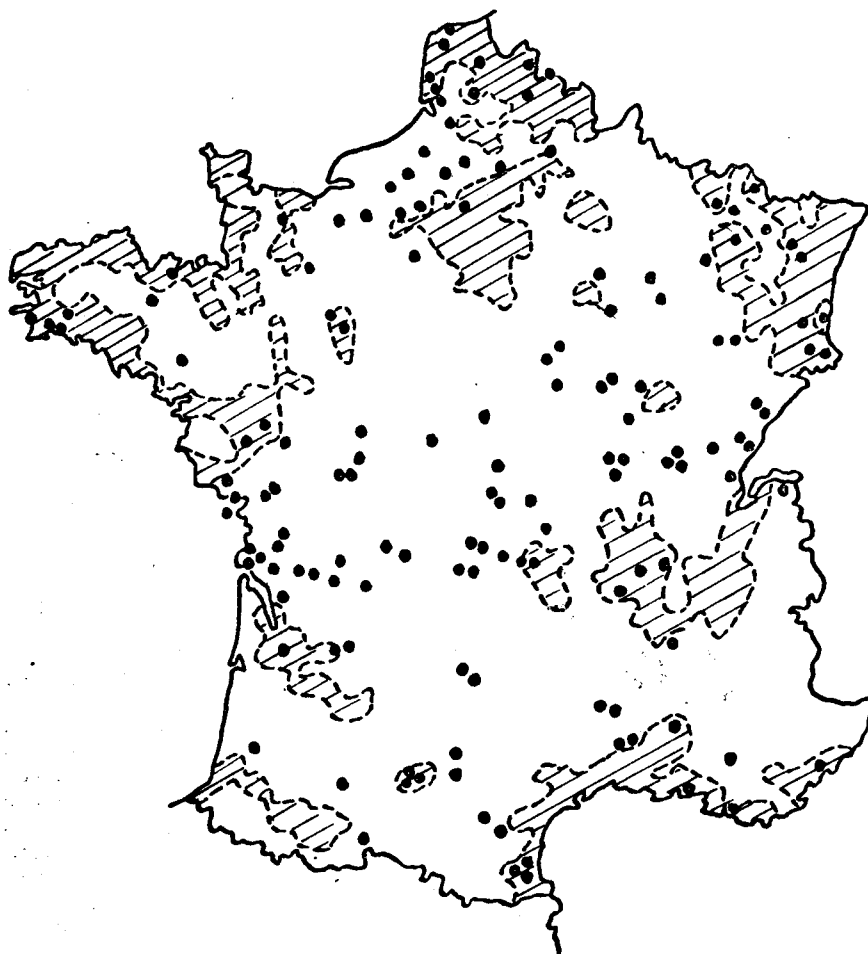
UFOS: Occupants?

Reports of UFO landings and sightings of occupants represent the UFO mystery in its most crucial form because they confront us with a clear choice between the reality of an unprecedented phenomenon (and the strong suggestion of its intelligent origin) and the hypothesis that all witnesses are absolute liars of the most extreme psychological type. Contrary to the reports of landings, accounts of objects seen in flight are always open to discussion in terms of natural effects and are thus less responsive to analysis. Also it is fast becoming obvious that no theory of the origin and nature of UFOs can afford to ignore the accounts of landings, of which several hundred have been published and which contain descriptions of the objects and their alleged 'operators' seen at close range. Descriptions of landings can be found in many books but probably one of the most interesting is that entitled 'The Pattern Behind the UFO Landings' by Jacques Vallee in which the author formulated a report on the Analysis of 200 documented observations made in 1954. After listing, in precise form, details of every incident, Vallee proceeded to analyse the sightings in a most scientific manner.

He readily admits that the natural feeling is certainly one of shock and disbelief at first and it does not seem possible to introduce any semblance of order in events so far out of the ordinary. Yet this in fact is what he did. He initially considered the reports as a whole, and observed:

1. That the main series of events (reported in 1954) started with a clear, sudden burst of activity in September and tended to subside early in November. At the same time it was noticed that the centre of this activity shifted geographically during the second half of October with the most remarkable reports coming from Italy and South America rather than France (where the initial wave had occurred). This was the first hint that this activity, strange as it may appear, might be linked to some physical or psychological reality which could thus be studied with profit.
2. That a possible cause of the reports (the 'stimulus') was indeed real; it was psychological in nature. In other words, all the witnesses were victims of their imagination. This theory was formalised by Professor Heuyer in a celebrated communication to the French Academy of Medicine: people are the victims of a 'flying saucer psychosis', and the stories they read in newspapers have a strong effect on their imagination: under this influence, feeble-minded individuals start generating rumours which spread from building to building and from one area of the city to another. Such rumours of course, are typical of the tensions of modern over-crowded population centres.

Vallee gave conclusive evidence of the falsity of this last theory. He showed that there is indeed order in the sightings, and that what seemed an unorganised mass of rumours was in reality correlated very strongly with phenomena which were undoubtedly of a physical rather than psychological nature. He first exhibited negative correlations with all the factors upon which psychological theory could be based. He then considered the laws of the phenomenon and found great coherence, constant with the hypothesis that the great majority of the reported incidents were real.



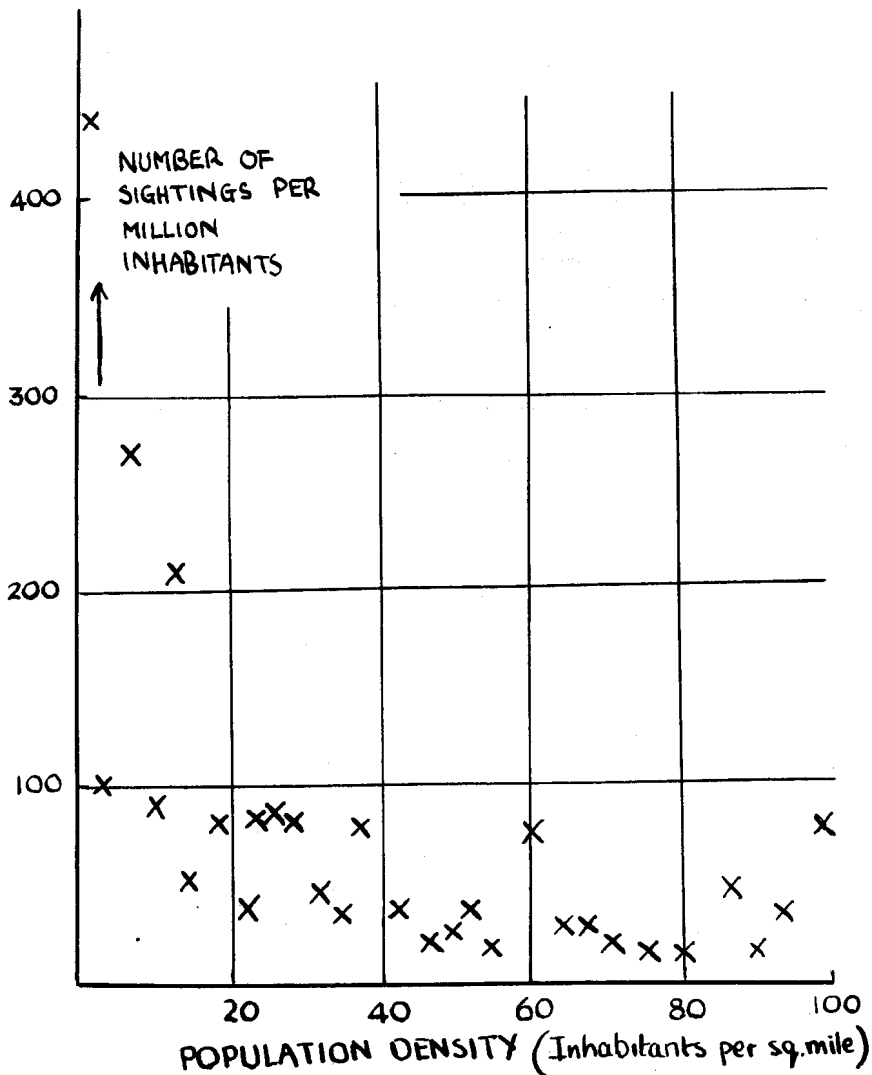
The landing sites of 1954 plotted against population density

 population density above 60 per square kilometer

If Heuyers' theory were correct then one would find a greater source of reports in built-up areas when the environment was ideal for rumour spreading. The map shown here disproved this. From this Vallee hypothesised:

"The geographic distribution of the landing sites in 1954 is inversely correlated with population density".

At this point it is interesting to consider the universality of this statement. The graph below shows this same correlation for sightings in the U.S.A.



Vallee also concluded, after examining the reports in detail, that the main body of witnesses were not cranks, publicity seekers or psychotics but were "men, women and children in normal proportion. Most held steady jobs, often positions of social responsibility and observed an unusual phenomenon while engaged in their usual occupation and in their usual environment"

The numerous reports of 1954 in France enabled Vallee to make a valuable analysis of the phenomenon and also dispels the common fallacy that nearly all stories of this type come from the U.S.A. Indeed the wide geographical spread of the phenomenon is

immediately apparent from the list below, which is extracted from a table compiled by Coral and James Lorenzen. They are the co-founders of the Aerial Phenomenon Research Organisation (APRO) and the table, given in their book "Flying Saucer Occupants" lists some 97 reported sightings between the years 1947 and 1966 and gives details of the craft, "occupant type", time of day as well as location.

<u>Country</u>	<u>Number of Sightings</u>
U.S.A.	29
France	22
Brazil	16
Argentina	8
Venezuela	5
Peru	4
Italy	3
Gt. Britain	2
Canada	2
Germany, Iraq, Mexico, Morocco, New Guinea, Uruguay	1 each

1 min 13secs

39.4 secs

30.4secs

29.4 SECS

"YARD" RECORD SHATTERED 4 TIMES IN ONE EVENING

From our Bacchanalian Correspondent

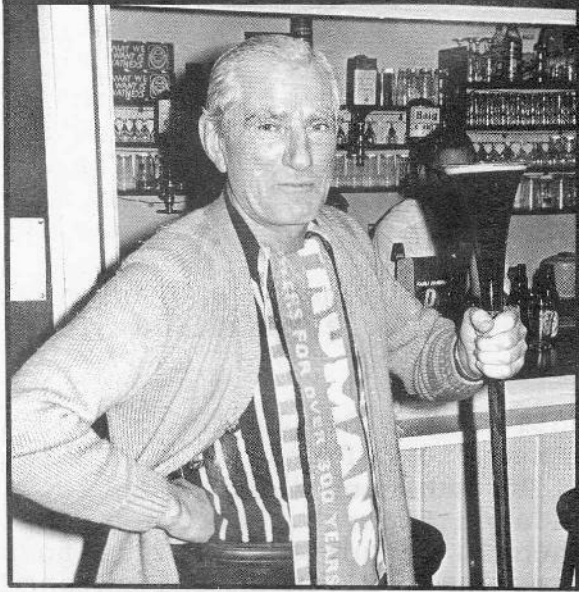
- Bar, Tues. 21st Jan.

When the bar acquired its "Yard of Ale" glass some years ago, former B.T. Editor Robin Wood nobly volunteered to set an initial target for future imbibers. In the event his time of exactly 2 minutes has remained unsurpassed for an inordinate length of time. Many drinkers have regarded the record as "soft", but until bluff, bearded, boat-building Ernie Cave took up the challenge the efforts to improve on Robin's time had been both unimpressive and unsuccessful.

Ernie started quietly with a solo effort last Thursday which lowered the time to 1 min 39 secs. But by this evening the word had spread and four competitors and a host of well-wishers gathered to attack the new record. First to go was a track-suited Stuart Castle who produced a sturdy effort of 1 min 52.6 secs, better than Robin's old record but outside Ernie's new time. Vic Denholm, who had reputedly been sweating up a phenomenal thirst working in the boiler house all day, was next into the fray. Sporting a natty style in Ben Truman neckware he succeeded in clipping a tremendous 26 seconds off Ernie's time; just 1 minute and 13 gurgling seconds. Dave Connolly was the evening's third competitor. He had great difficulty in manipulating the strange shape of the yard glass and was eventually forced to retire. "For Heaven's sake put it in a pint pot" was his only (quotable) comment.

The came the evening's sensational performance. Up stepped Ernie, in running shorts and plimsoles, determined to regain the record that Vic had so splendidly gulped away from him. The ale was prepared with professional aplomb, suitable measures being taken to remove as much fizz and froth as possible before filling the slender yard glass. When all was poised and ready glass was raised to mouth and drinking commenced; only to finish 39.4 seconds later! Vic's record had been shattered almost in half. Flushed with success, and the realisation that each time the record is broken the beer consumed in the attempt is 'on the house', Ernie quickly tried again and down came the time to 30.4 seconds. Only a momentary pause for a quick curse prevented the champion from getting under a half-minute on this occasion, but by the end of the evening a third and final attempt lowered the record even further to 29.4 secs.

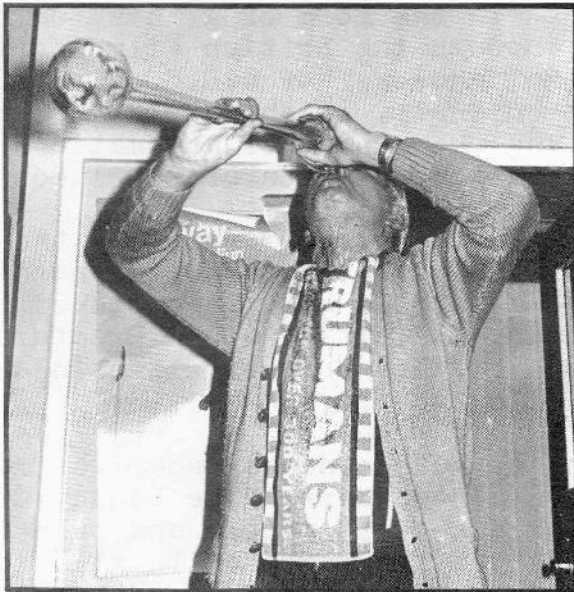
All in all it was a phenomenal display of throat muscle control by Mr. Cave who looks forward to improving further on his time, and perhaps approaching the British record of 6½ seconds!



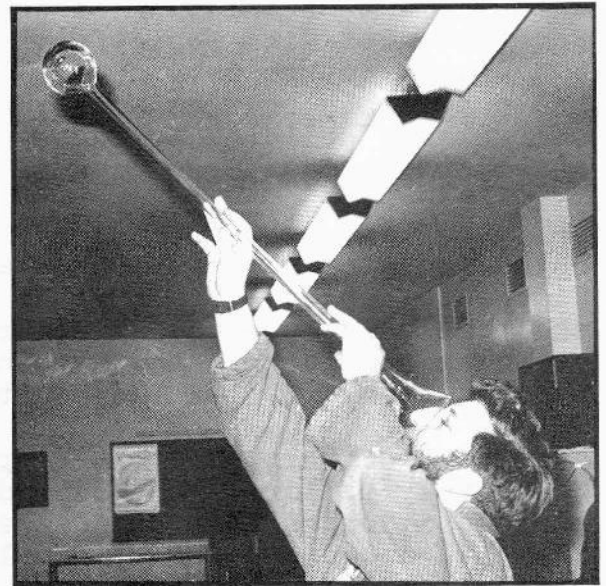
ANTICIPATION



DELIBERATION



ELEVATION



CAVITATION?

LATE EXTRA! On Thursday 23rd January, Ernie Cave reduced the record yet again, to a mere 20 seconds! Cave? More like a bottomless pit!

CINECENTA

The cinema in this country has been in decline for many years now, and television is often blamed for this situation. But is T.V. the only reason? The present situation is that films usually start their careers in this country with a run in the West End. The lucky few are then booked for a general release on one of the two major circuits. The remainder, and this somehow seems to include most of the best films, are not so lucky; apart from the odd week at the few "art" cinemas that have survived, or an evening at the N.F.T., they will hardly be seen again unless some enterprising distributor takes a chance and acquires the 16 mm rights when the film may again be seen occasionally at film society shows.

The main criterion in the selection of films by the circuits is box office potential, usually to the exclusion of quality. And this policy, or at least the way it is applied by Rank and A.B.C., seems misguided to judge by the declining attendance figures. And yet occasionally they do choose a first class film, and then it is quite revealing to see the queues at the box offices. This proves that, given an enlightened policy as regards film selection, it is possible to attract the crowds away from T.V. and back to the cinema.

At last there are signs that this lesson is being learned, and there have recently been some encouraging changes in the world of film distribution and exhibition. These include the recent expansion of the Classic chain of cinemas, the opening of provincial branches of the National Film Theatre and, not least, Government recognition and encouragement of the film society movement (in the form of grants to the Federation of Film Societies channelled through the British Film Institute). And likely future developments include the take-over of A.B.C. by E.M.I. and a possible reorganisation of the Rank circuit, which may lead to more enlightened policies by these circuits, and the advent of automatic 16 mm cinemas. To these must now be added an exciting new venture - Cinecenta.

Situated in Panton Street, between Leicester Square and the Haymarket, the London Cinecenta opened on January 13th, and its "satellite", Cinecenta Putney (formerly the Globe cinema) should also have opened by the time this appears. Two more Cinecentas, in Sheffield and Bradford, are also due to open any day now, and some fifteen further sites in major cities all over the country will follow shortly.

Cinecentas are a complex of one or more cinemas under one roof, completely tailored to the needs of today's cinemagoers. The London Cinecenta houses four cinemas each seating about 150 people and offering, usually, a choice of four completely different programmes with times of screening so arranged that the cinemagoer's comfort and convenience is the first concern (programmes in London start at 10. a.m. and 12, 2, 4, 6, 8 and 10 p.m.).

Cinecenta is the brainchild of Leslie Elliot, who a couple of years ago took over the Compton Group of Film Companies. He intends Cinecentas to be not so much art houses as groups of cinemas providing motion picture entertainment for today's cinemagoers, and interest in the whole conception of films and filmgoing will be further stimulated by plans to make records, books, magazines and even cinema trade papers available to the audiences as part of a regular service.

One of the most radical innovations in the plans announced so far is the advertising campaigns, which are intended to be objective and self-critical. Leslie Elliot has said: "It is our belief that the majority of cinemagoers simply no longer believe film advertising. For too long they have submitted to "this is the greatest" and "the most sensational". If we accept that today's cinemagoer is intelligent then it would be logical to assume that a considerable amount of money is wasted by efforts to aim adverts at a sub-intelligent level. Cinecenta will have a policy of truth in advertising We hope at some time or another to appeal to all sections of the cinemagoing public but quite definitely not all at once. Each film will be aimed directly at the market we believe it will appeal to. Our advertisements will take the form of information and in a sense be self-critical and objective".

Many of the films to be shown at Cinecentas will be European, since these suffer most from today's distribution systems, but the London centre has opened with a British film showing in all four cinemas. This is WONDERWALL, directed by Joe Massot, which has George Harrison's first film score and stars Jack Macgowan, Iain Quarrier and Jane Birkin. Later films will include Claude Chabral's LES BICHES, Hans Abramson's THE SINNING URGE, Jan Troell's OLE DOLE DOFF, Kaneto Shindo's KURONEKO, Marran Gosow's ENGELCHEN and a host of other films, many of which have won top prizes at international film festivals.

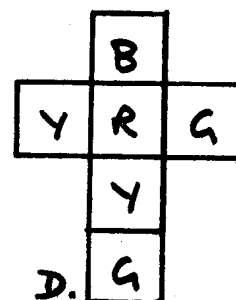
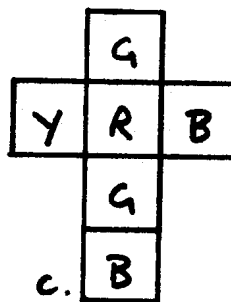
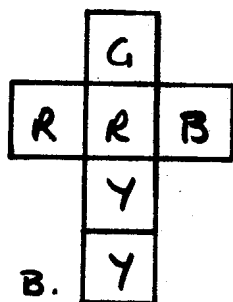
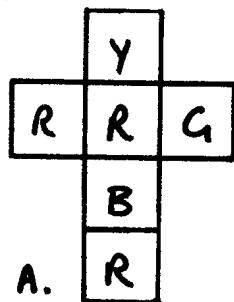
In the words of "Films and Filming": "At last an effort is being made to cater for the discerning filmgoer in Britain". One must wish Leslie Elliot every success in his enterprise.

(The history of the Wood Lane Film Section will be resumed next month - Ed)

Momentary Madness

A well-publicized puzzle consists of a set of four cubes having variously coloured faces. The object of the puzzle is to arrange the cubes in a line in such a way that all four of the colours used (Yellow, Blue, Green and Red) are exhibited on each of the four long faces.

To save anyone who may not have one of these puzzles the trouble of buying one and actually fiddling with the thing, schematic drawings of the cubes in which the faces are labelled to indicate their colours, are as follows:



Assuming that you have solved the puzzle, if a red face is uppermost on cube A, what are the colours of the bottom faces of the four cubes A, B, C, D in that order?

Answer next month.

**PARTY
VISIT**

BOOK



ODEON

HAYMARKET

TELEPHONE 930 2738

S.W.1.

NOW!

**PETER
O'TOOLE**

**KATHARINE
HEPBURN**

THE LION IN WINTER



FRIDAY MARCH 14TH 1969 AT 8.00 P.M.

SEATS PRICE £1 EACH

TICKETS AVAILABLE FROM: ANNETTE MATTOCK (243)
OR TED MORRISON (333)